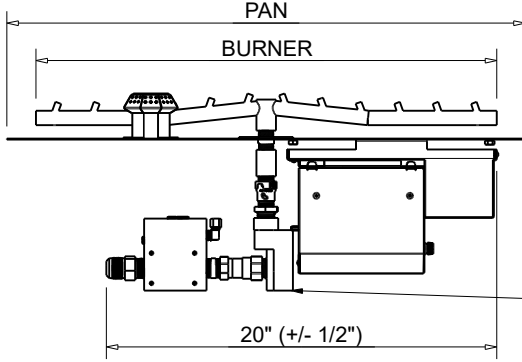




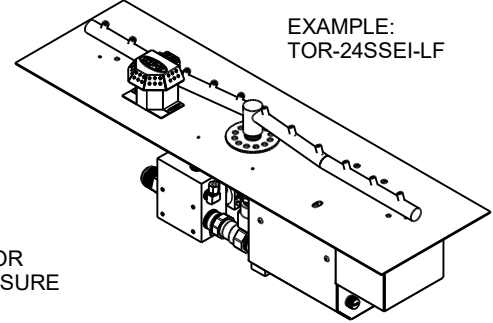
**FIRE INSPIRED<sup>®</sup>**

**CSA CERTIFIED-OUTDOOR USE ONLY  
FOR COMMERCIAL AND RESIDENTIAL USE**

**HEARTH PRODUCTS CONTROLS  
2225 LYONS RD.  
MIAMISBURG, OH 45342  
TOLL FREE: 877.585.9800  
PHONE: 937.436.9800  
www.hpcfire.com**



SIDE ELEVATION



ISOMETRIC VIEW

AVAILABLE IN:

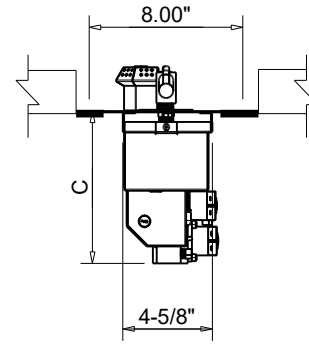
- 120VAC, 24VAC, OR 12VAC
- ON/OFF OR HI/LO

MATERIAL: 304 STAINLESS STEEL

HI/LO MODELS HAVE A 40% REDUCTION IN BTU ON LOW SETTING

1/4" TAP PLUG FOR  
MANIFOLD PRESSURE  
CHECK

EXAMPLE:  
TOR-24SSEI-LF



FRONT ELEVATION

PART NUMBER	BTU	DIMENSION CHART		
		PAN	BURNER	C" (+/- 1/2")
TOR-24SSEI-LF	75K	27"	24"	7-3/4
TOR-36SSEI-LF	115K	39"	36"	7-3/4
TOR-48SSEI-LF	150K	51"	48"	7-3/4
TOR-60SSEI-LF	175K	63"	60"	7-3/4
TOR-72SSEI-LF	200K	75"	72"	7-3/4
TOR-96SSEI-LF	300K	99"	96"	7-3/4
TOR-120SSEI-LF	300K	133"	120"	7-3/4

**NOTES:**

**1. PROPER VENTING**

● ENCLOSURES:

- For Fire Pit up to 200K BTU: Required minimum 2 vents, 18 sq.in. each on opposing sides.
- For Fire Pit Inserts above 200K BTU: Required minimum 4 vents, 18 sq.in. each on opposing sides.

● BOWLS (Copper, concrete or metal)

- For Fire Pit inserts up to 90K: Required minimum 2 vents, 9 sq.in. each on opposing sides.
- Or bowl to be raised above mounting surface minimum of 3/4" gap; Bowl to have a minimum of 6" diameter hole in bottom.

**2. GAS SUPPLY - FOR USE WITH FIXED PIPING SYSTEMS ONLY - NOT FOR USE WITH SMALL TANKS.**

- Natural Gas: Supply Pressure: Minimum: 3.5" W.C; Maximum: 7.0" W.C.
- LP Gas: Supply Pressure: Minimum: 8" W.C.; Maximum: 11.0" W.C.

**IMPORTANT:** Ensure any flex line that may be used from the permanent main fuel supply to the product is rated to the stated max btu of the product and certified to ANSI Z21.75\*CSA 6.27.

**3. MODIFICATION OF PRODUCT WILL VOID ANY CERTIFICATION AND WARRANTY.**

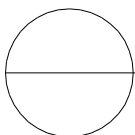
**4. FOLLOW ALL MANUFACTURER'S INSTALLATION INSTRUCTIONS AND LOCAL CODES.**

**5. ALL DIMENSIONS ARE CONSIDERED TRUE AND REFLECT MANUFACTURER'S SPECIFICATIONS AS OF THE REVISION DATE.**

**6. DO NOT SCALE DRAWING.**

**7. THESE DRAWINGS ARE FOR SIZING AND PLANNING PURPOSES. ALL INFORMATION CONTAINED HEREIN WAS CURRENT AT THE TIME OF DEVELOPMENT. THE MANUFACTURER IS RESPONSIBLE FOR THE ACCURACY OF THE DRAWING.**

**8. CONTRACTOR'S NOTE: FOR PRODUCT AND COMPANY INFORMATION VISIT [www.CADdetails.com/info](http://www.CADdetails.com/info) REFERENCE NUMBER 771-081**



**ELECTRONIC IGNITION**

**EI LINEAR FLAT**

**FLAME SENSING WITH ELECTRONIC HOT SURFACE IGNITION**

