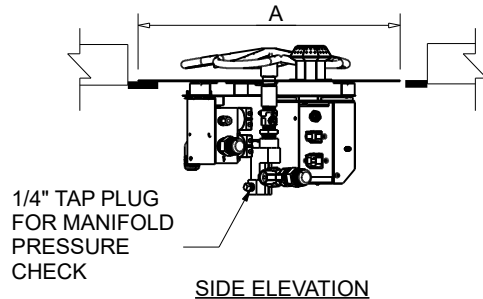




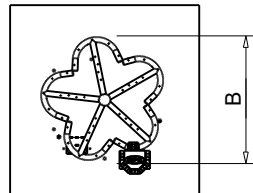
**FIRE INSPIRED™**

**CSA CERTIFIED-OUTDOOR USE ONLY  
FOR COMMERCIAL AND RESIDENTIAL USE**

**HEARTH PRODUCTS CONTROLS**  
2225 LYONS RD.  
MIAMISBURG, OH 45342  
TOLL FREE: 877.585.9800  
PHONE: 937.436.9800  
[www.hpcfire.com](http://www.hpcfire.com)



SIDE ELEVATION



TOP VIEW

**AVAILABLE IN:**

- 120VAC OR 24VAC
- ON/OFF OR HI/LO

**MATERIAL: 304 STAINLESS STEEL**

**HI/LO MODELS HAVE A 40% REDUCTION IN BTU ON LOW SETTING**

PART NUMBER*		BTU		DIMENSION CHART			
		PENTA	TORPEDO	A"	B"	C" (+/- 1/2")	
						PENTA	TORPEDO
TOR-	18SSEI-SQ	90K	90K	18	12	7-3/4	7-3/4
TOR-	24SSEI-SQ	150K	140K	24	18	9-3/4	7-3/4
TOR-	30SSEI-SQ	250K	225K	30	24	9-3/4	7-3/4
TOR-	36SSEI-SQ	300K	275K	36	30	10-3/4	7-3/4
TOR-	42SSEI-SQ	400K	375K	42	36	11-3/4	7-3/4

\*FOR TORPEDO BURNERS ADD TOR-

**NOTES:**

**1. PROPER VENTING**

• ENCLOSURES:

- For Fire Pit up to 200K BTU: Required minimum 2 vents, 18 sq.in. each on opposing sides.
- For Fire Pit Inserts above 200K BTU: Required minimum 4 vents, 18 sq.in. each on opposing sides.

• BOWLS (Copper, concrete or metal)

- For Fire Pit inserts up to 90K: Required minimum 2 vents, 9 sq.in. each on opposing sides.
- Or bowl to be raised above mounting surface minimum of 3/4" gap; Bowl to have a minimum of 6" diameter hole in bottom.

**2. GAS SUPPLY - FOR USE WITH FIXED PIPING SYSTEMS ONLY - NOT FOR USE WITH SMALL TANKS.**

- Natural Gas: Supply Pressure: Minimum: 3.5" W.C.; Maximum: 7.0" W.C.
- LP Gas: Supply Pressure: Minimum: 8" W.C.; Maximum: 11.0" W.C.

**IMPORTANT:** Ensure any flex line that may be used from the permanent main fuel supply to the product is rated to the stated max btu of the product and certified to ANSI Z21.75\*CSA 6.27.

**3. MODIFICATION OF PRODUCT WILL VOID ANY CERTIFICATION AND WARRANTY.**

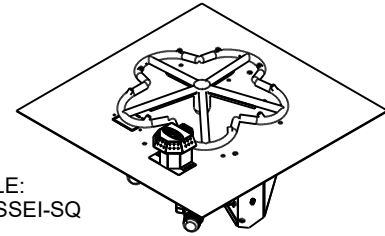
**4. FOLLOW ALL MANUFACTURER'S INSTALLATION INSTRUCTIONS AND LOCAL CODES.**

**5. ALL DIMENSIONS ARE CONSIDERED TRUE AND REFLECT MANUFACTURER'S SPECIFICATIONS AS OF THE REVISION DATE.**

**6. DO NOT SCALE DRAWING.**

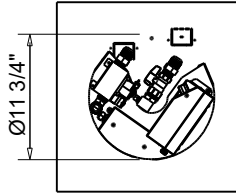
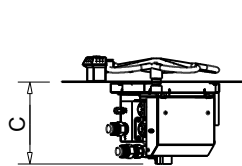
**7. THESE DRAWINGS ARE FOR SIZING AND PLANNING PURPOSES. ALL INFORMATION CONTAINED HEREIN WAS CURRENT AT THE TIME OF DEVELOPMENT. THE MANUFACTURER IS RESPONSIBLE FOR THE ACCURACY OF THE DRAWING.**

**8. CONTRACTOR'S NOTE: FOR PRODUCT AND COMPANY INFORMATION VISIT [www.CADdetails.com/info](http://www.CADdetails.com/info)**  
REFERENCE NUMBER 771-047

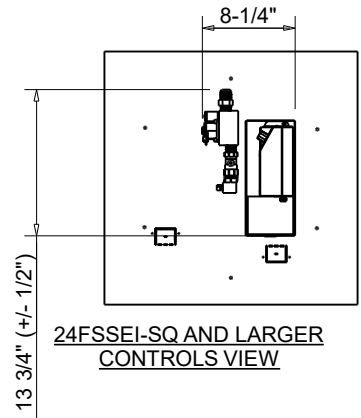
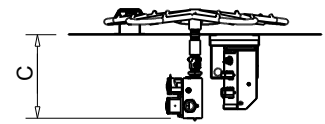


EXAMPLE:  
TOR-18SSEI-SQ

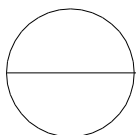
ISOMETRIC VIEW



18FSSEI-SQ  
CONTROLS VIEW



24FSSEI-SQ AND LARGER  
CONTROLS VIEW



**ELECTRONIC IGNITION**

**EI SQUARE PAN**

**FLAME SENSING WITH ELECTRONIC HOT SURFACE IGNITION**

