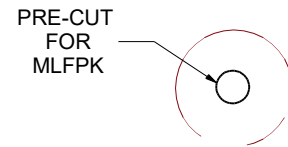
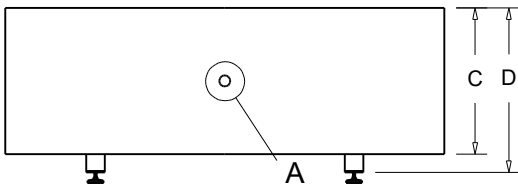
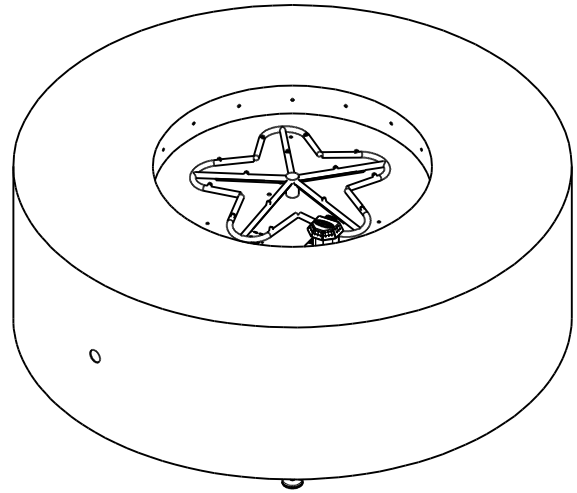
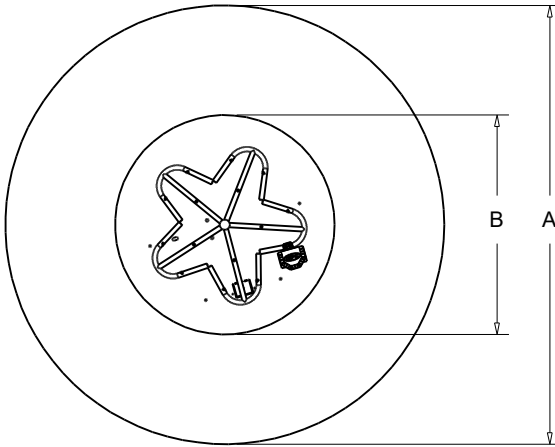




FIRE INSPIRED®

FIRE PIT INSERT CSA CERTIFIED-OUTDOOR USE ONLY  
FOR COMMERCIAL AND RESIDENTIAL USE

HEARTH PRODUCTS CONTROLS  
2225 LYONS RD.  
MIAMISBURG, OH 45342  
TOLL FREE: 877.585.9800  
PHONE: 937.436.9800  
www.hpcfire.com



Detail A

**AGNI SERIES - ROUND METAL ENCLOSURE**

AGNI ENCLOSURE	A	B	C	D
AGNI48	48"	24"	16"	18"
AGNI60	60"	30"	16"	18"

**ELECTRONIC IGNITION - ON/OFF**

PART NUMBER	STD BTU	TOR BTU	POWER	BURNER
AGNI48-EI	125K	140K	120 VAC OR 24 VAC	TOR-PENTA18
AGNI60-EI	200K	225K	120 VAC OR 24 VAC	TOR-PENTA24

**ELECTRONIC IGNITION - HI/LO**

PART NUMBER	STD BTU	TOR BTU	POWER	BURNER
AGNI48-EI-HI/LO	125K	140K	120 VAC OR 24 VAC	TOR-PENTA18
AGNI60-EI-HI/LO	200K	225K	120 VAC OR 24 VAC	TOR-PENTA24

**MATCH LIT (MLFPK)**

PART NUMBER	STD BTU	TOR BTU	POWER	BURNER
AGNI48-MLFPK	65K	65K	-	TOR-PENTA18
AGNI60-MLFPK	65K	65K	-	TOR-PENTA24

**INCLUDED:**

**EI MODELS:**

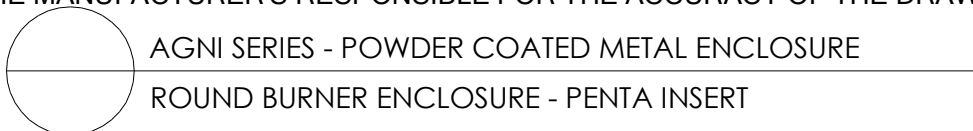
ENCLOSURE, FULLY ASSEMBLED  
INSERT, INPUT FLEX LINE,  
REMOTE(HI/LO UNITS ONLY) AND  
INSTRUCTIONS

**MLFPK:**

ENCLOSURE, FULLY ASSEMBLED  
INSERT AND INSTRUCTIONS

**NOTES:**

1. CONSTRUCTION - MATERIAL: .060 MILD STEEL SHEET, FINISH: POWDER COATED WEIGHS: 110 LBS (AGNI48) AND 130 LBS (AGNI60).
2. ALL ENCLOSURES INCLUDE FULL OPEN VENTING ALONG BOTTOM. ADEQUATE DRAINAGE IS NEEDED.
2. FOLLOW ALL MANUFACTURER INSTALLATION INSTRUCTIONS AND LOCAL CODES.
3. ALL DIMENSIONS ARE CONSIDERED TRUE AND REFLECT MANUFACTURER'S SPECIFICATIONS AS OF THE REVISION DATE.
4. DO NOT SCALE DRAWING.
5. THESE DRAWINGS ARE FOR SIZING AND PLANNING PURPOSES.
6. ALL INFORMATION CONTAINED HEREIN WAS CURRENT AT THE TIME OF DEVELOPMENT. THE MANUFACTURER'S RESPONSIBLE FOR THE ACCURACY OF THE DRAWING.



AGNI SERIES - POWDER COATED METAL ENCLOSURE

ROUND BURNER ENCLOSURE - PENTA INSERT