



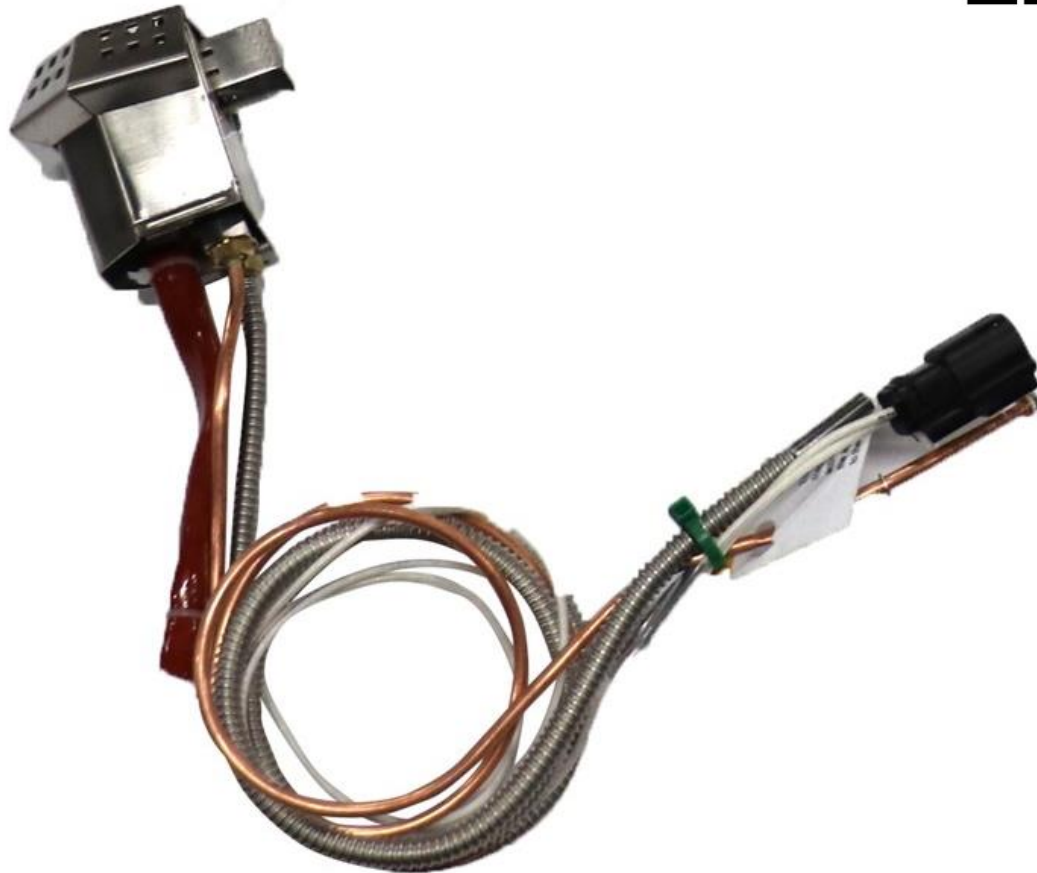
Available on the  
App Store



ANDROID APP ON  
Google play



# Pilot Assembly Replacement



---

## Electronic Ignition Pilot Assembly

Replacement Instructions

*Install Confidence.™*



**FIRE INSPIRED™**



### This is a Safety Alert Symbol

When you see this symbol on the fire pit insert, or in this manual, look for one of the following signal word panels alerting you to the potential for personal injury, death, or major property damage.

## IMPORTANT

Necessary instructions



### WARNING

**FOR OUTDOOR USE ONLY**



### WARNING

Improper installation, adjustment, alteration, service, or maintenance can cause injury or property damage. Read the installation, operating, and maintenance instructions thoroughly before installing or servicing this equipment.



### WARNING

- Do not store or use gasoline or other flammable vapors and liquids in vicinity of this or any other appliance.
- An LP-cylinder not connected for use shall not be stored in the vicinity of this or any other appliance.



### DANGER

If you smell gas:

- 1) Shut off gas to appliance.
- 2) Extinguish any open flame.
- 3) If odor continues, keep away from appliance and immediately call gas supplier or fire department.



### DANGER



### CARBON MONOXIDE HAZARD

This appliance can produce carbon monoxide which has no odor. Using it in an enclosed space can kill you.

Never use this appliance in an enclosed space such as a camper, tent, car, or home.

The content of this manual may be revised without prior notice. Please consult with your Hearth Products Controls representative to obtain the most current version.

# Table of Contents

---

|          |   |          |
|----------|---|----------|
| <b>1</b> | <b>Important Safety Information .....</b> | <b>3</b> |
|          | Technical Support.....                    | 3        |
| <b>2</b> | <b>Shallow Mount Control Box.....</b>     | <b>4</b> |
|          | Single Ferrule Pilot Replacement .....    | 4        |
|          | First Steps for Removal .....             | 4        |
|          | Installation of New Pilot Assembly .....  | 5        |
|          | Final Steps of Installation .....         | 6        |
| <b>3</b> | <b>Valve Box Controls .....</b>           | <b>7</b> |
|          | Two-piece Ferrule Pilot Replacement.....  | 7        |
|          | First Steps for Removal .....             | 7        |
|          | Installation of New Pilot Assembly .....  | 8        |
|          | Final Steps of Installation .....         | 9        |

## 1 Important Safety Information

---

- Hearth Products Controls Company recommends that our products are installed by professionals locally licensed by the authority having jurisdiction in gas piping. All installation instructions must be followed to ensure proper performance and safety. Hearth Products Controls Company assumes no responsibility for problems relating to the installation.
- To qualify for warranty, all instructions must be strictly followed. Otherwise, warranty may be void. Never alter product or configuration in any way.
- Annual servicing should be handled by professionals certified in the US by the National Fireplace Institute (NFI) as NFI Gas Specialists or in Canada by WETT (Wood Energy Technical Training).
- It is the installer's responsibility to ensure a safe installation and to educate the end-user regarding the features, safety recommendations and proper operation of this product.
- Please reference page 1 for all warnings.



---

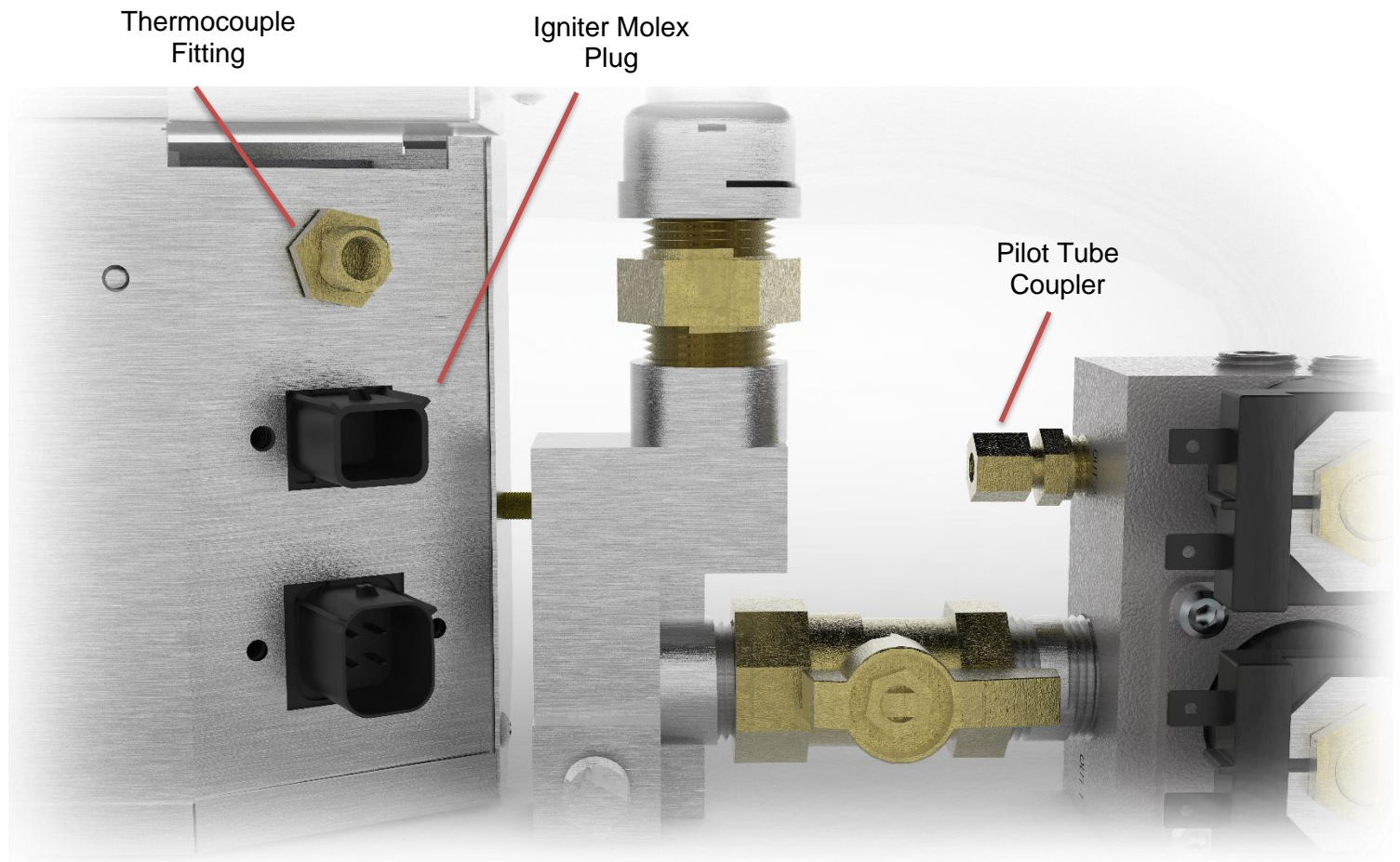
## Technical Support

For information and support contact your Hearth Products Controls dealer.

## 2 Single Ferrule Pilot Replacement

---

### Shallow Mount Control Box



### First Steps for Removal:

1. Shut off power and fuel before proceeding
2. Using a 3/8" wrench to thermocouple nut to remove thermocouple
3. Remove pilot tube using a 1/2" wrench from the valve
  - Leave fitting attached to valve
4. Replace Molex plug by pulling back on the white clip, if equipped, then press in the black tab and pull back removing the plug
  - This may be difficult. Be careful not to damage the connector.
5. Remove pilot assembly from pan by unfastening the screws holding down the pilot shroud.
6. Guide pilot assembly out from the pan

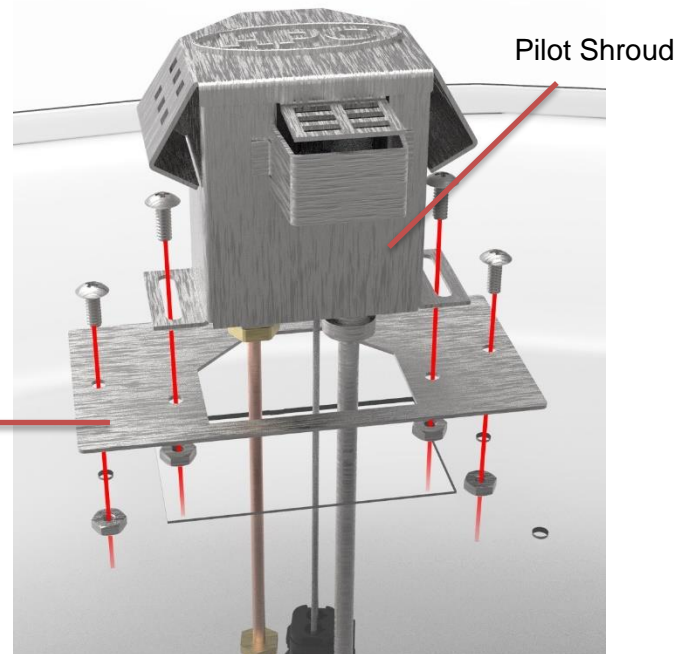
## 2 Single Ferrule Pilot Replacement

### Installation of new Pilot Assembly:

#### Attach Pilot Assembly to pan

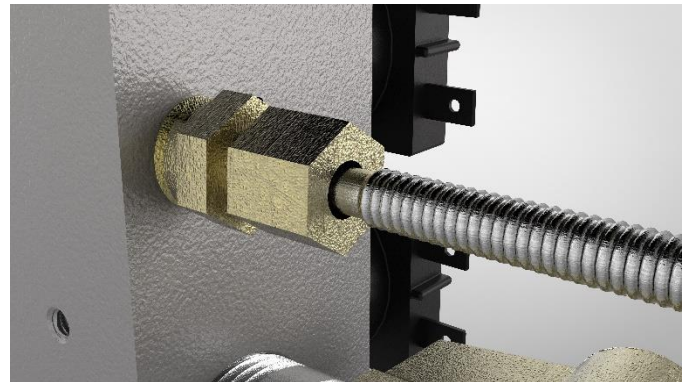
1. If applicable, attach transition plate to existing hole for pilot in pan
2. Slide pilot assembly replacement through hole of transition plate and mount pilot shroud to pan

Transition  
Plate



#### Connecting pilot tube to valve

1. Slide compression nut onto end of pilot tube
2. Slide Ferrule onto pilot tube
3. Connect pilot tube to pilot tube coupler
4. Insert tube into coupler until it stops
5. Hand tight compression nut onto pilot tube coupler
6. Tighten the compression fitting using a 1/2" wrench at 1 1/4 turns
  - As a guide, make a mark on the compression nut to help visualize the amount of rotations
7. Pull/twist pilot tube to ensure that tube is tight



#### Connecting thermocouple to control box

1. Tighten to snug using a 3/8" wrench
  - Over tightening will damage the connection

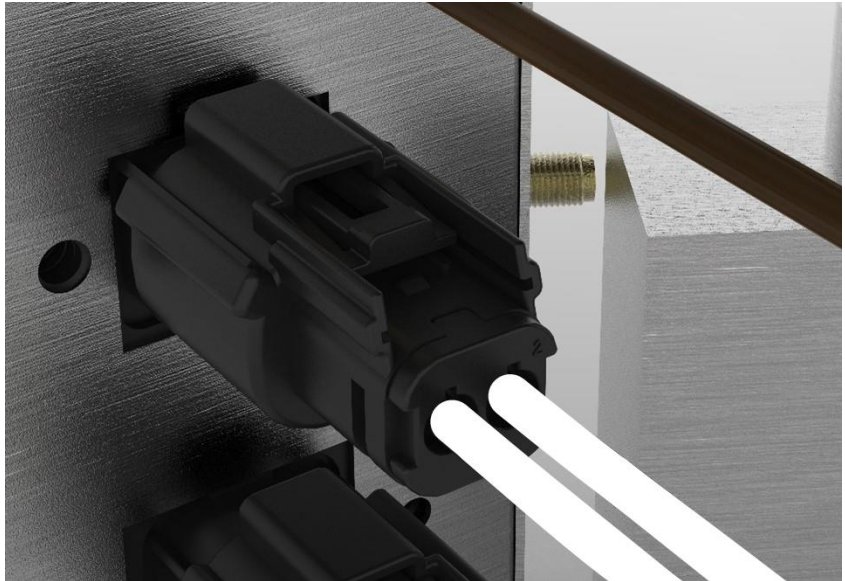


## 2 Single Ferrule Pilot Replacement

---

### Connecting igniter to Molex connector

1. Connect Molex until it snaps in place
2. Push in white clip, if applicable.



### Final Steps After Installation:

1. Leave fire pit insert loose out of enclosure until final checks are complete
2. Turn on power and fuel
3. When checks are completed, reinstall fire pit insert



### Caution:

- Thoroughly check connections for leaks with leak detector
- No thread sealer is required for installation

### 3 Two-Piece Ferrule Pilot Replacement

---

#### Valve Box Controls



#### First Steps for Removal:

1. Shut off power and fuel before proceeding
2. Using a 3/8" wrench to thermocouple nut to remove thermocouple
3. Remove pilot tube using a 9/16" wrench from the valve box
4. Replace Molex plug by pulling back on the white clip, if equipped, then press in the black tab and pull back removing the plug
  - This may be difficult. Be careful not to damage the connector.
5. Remove pilot assembly from pan by unfastening the screws holding down the pilot shroud.
6. Guide pilot assembly out from the pan

### 3 Two-Piece Ferrule Pilot Replacement

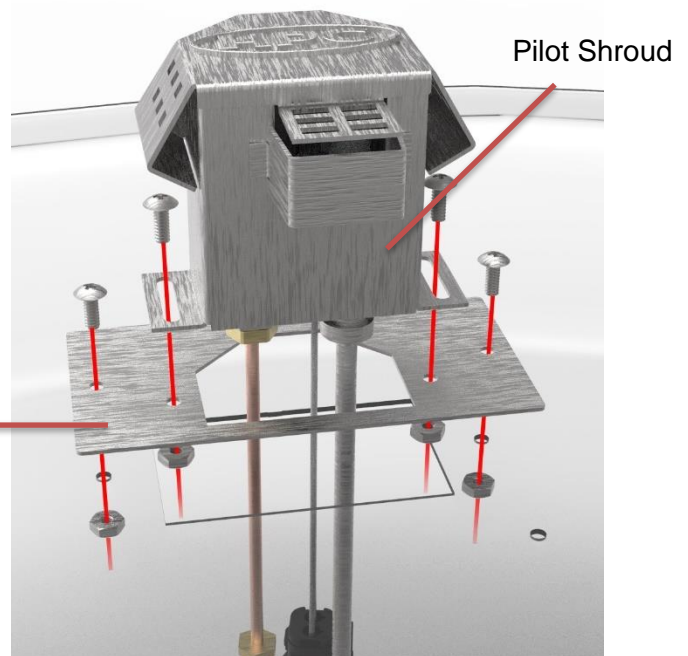
---

#### Installation of new Pilot Assembly:

##### Attach Pilot Assembly to pan

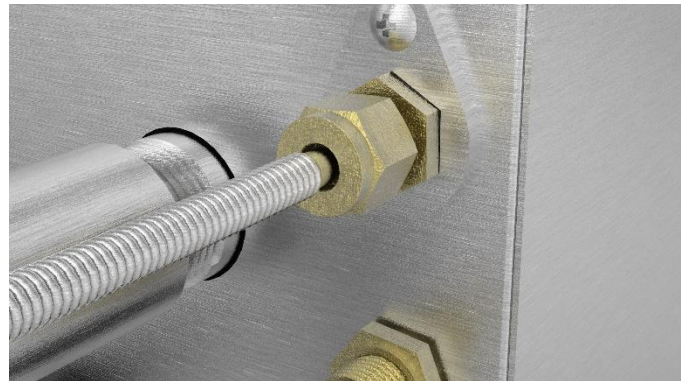
1. If applicable, attach transition plate to existing hole for pilot in pan
2. Slide pilot assembly replacement through hole of transition plate and mount pilot shroud to pan

Transition  
Plate



##### Connecting pilot tube to valve

1. Slide compression nut onto end of pilot tube
2. Slide two-piece Ferrule onto pilot tube
  - See Two-piece Ferrule sequence image
3. Connect pilot tube to pilot tube coupler
4. Insert tube into coupler until it stops
5. Hand tight compression nut onto pilot tube coupler
6. Tighten the compression fitting using a 9/16" wrench at 1 ¼ turns
  - As a guide, make a mark on the compression nut to help visualize the amount of rotations
7. Pull/twist pilot tube to ensure that tube is tight

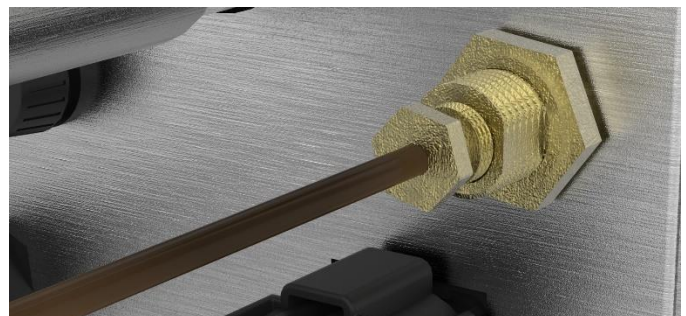


Two-piece  
Ferrule  
sequence

Ferrules

##### Connecting thermocouple to control box

1. Tighten to snug using a 3/8" wrench
  - Over tightening will damage the connection

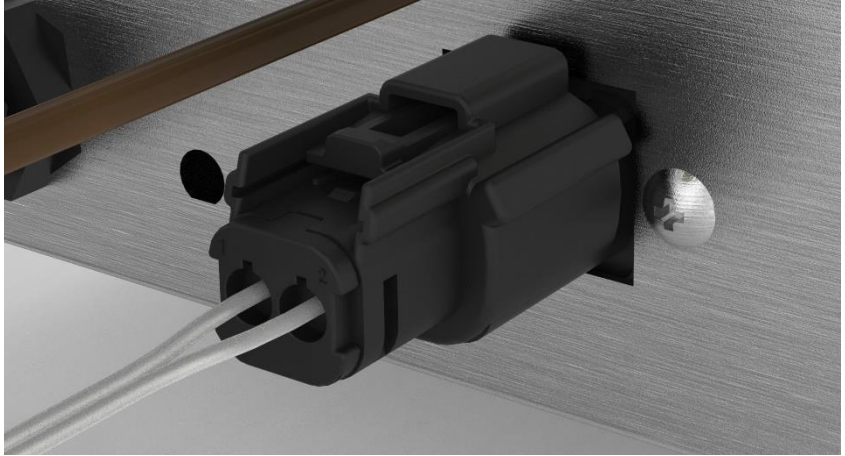


### 3 Two-Piece Ferrule Pilot Replacement

---

#### Connecting igniter to Molex connector

1. Connect Molex until it snaps in place
2. Push in white clip, if applicable.



#### Final Steps After Installation:

1. Leave fire pit insert loose out of enclosure until final checks are complete
2. Turn on power and fuel
3. When checks are completed, reinstall fire pit insert

#### **Caution:**

- Thoroughly check connections for leaks with leak detector
- No thread sealer is required for installation



**FIRE INSPIRED™**

**Hearth Products Controls**

**Fire-inspired since 1975.**

2225 Lyons Road  
Miamisburg, OH 45342

For detailed product information, go to [www.hpcfire.com](http://www.hpcfire.com)